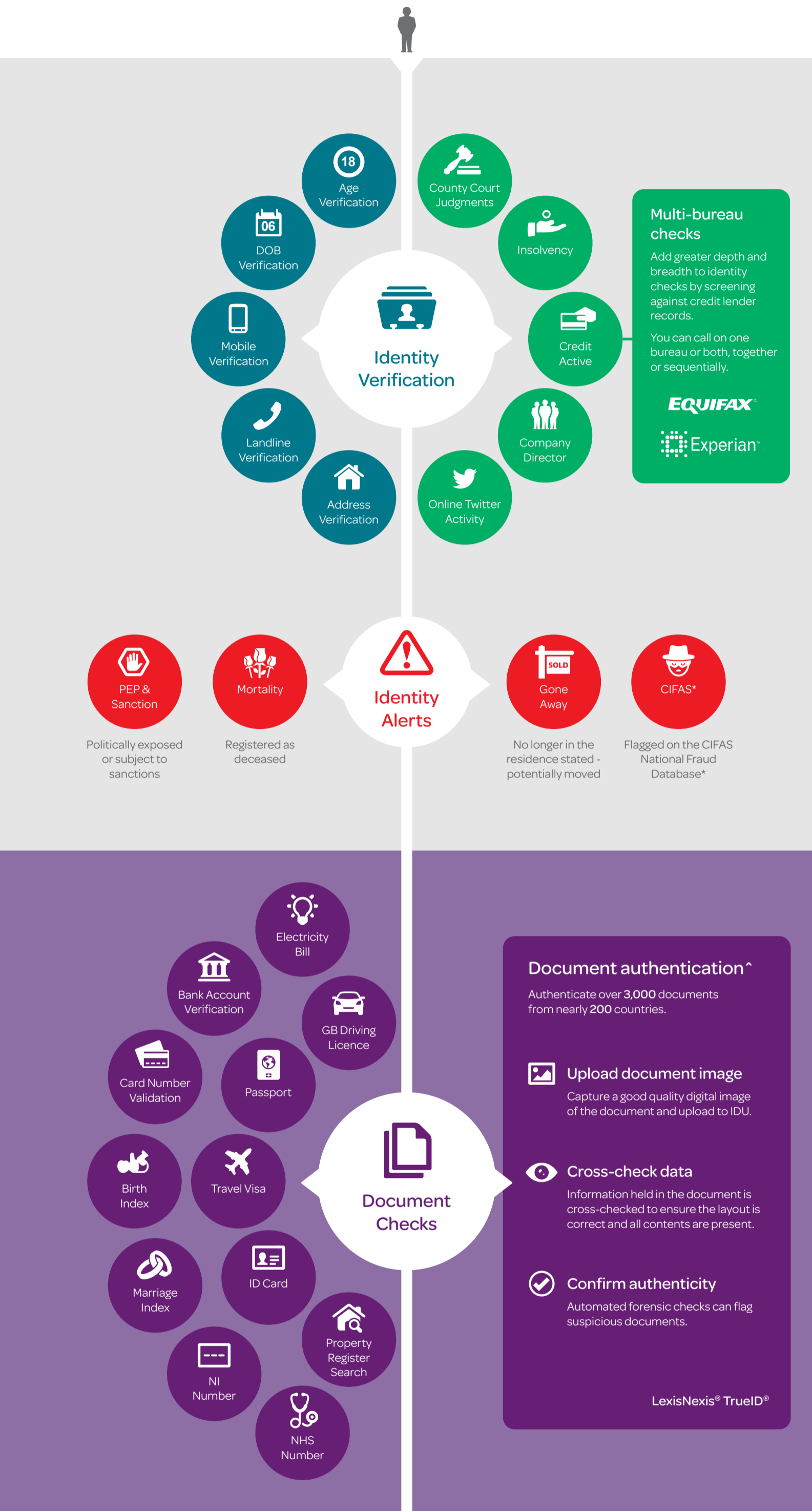
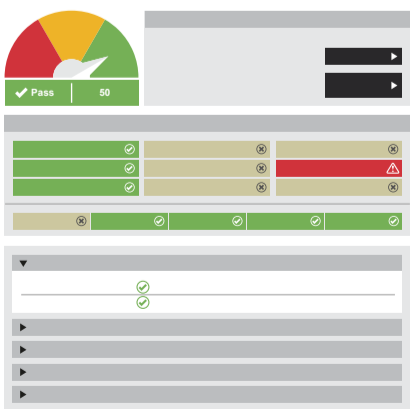


Provide a seamless customer experience with instant online identity verification

LexisNexis® IDU® enables you to have increased confidence in verifying an individual's identity whilst supporting a frictionless customer journey. Providing a multi-layered check and by screening against a variety of positive and negative datasets, IDU assists you with verifying and authenticating recognised identity documents, identifying potential risks and processing the results against a bespoke scorecard, tailored to your risk appetite.



All information is clearly displayed in an expandable report...



Access the web-based software online, or integrate into your existing systems via our API

Create bespoke scorecards to meet your business needs

Make IDU your own - apply your brand to the IDU interface

For more information

Call 029 2067 8555 or email ukenquiry@lexisnexis.com

lexisnexis.com/risk/tracesmart

* We are a CIFAS Direct Agency and provide access to the National Fraud Database via the CIFAS Portal Service. Access is only available to contributing CIFAS members.
 ^ Identity documents are regularly updated by their issuing authorities and whilst we endeavour to account for such changes as swiftly as possible, the coverage of identity documents the system is able to authenticate will fluctuate from time to time.
 Due to the nature of the origin of public records and commercially available data sources used in reports may contain errors. Source data is sometimes sourced or entered inaccurately, processed poorly or incorrectly, and is generally not free from defect. This product or service aggregates and reports data, as provided by the public records and commercially available data sources, and is not the source of the data, nor is it a comprehensive compilation of the data. Before relying on any data, it should be independently verified. The Document Authentication feature in LexisNexis IDU requires you provide a good quality image in order to be able to authenticate an identity document. End users are responsible for ensuring the quality of the image provided, and LexisNexis Risk Solutions takes no responsibility for the image quality. LexisNexis and the Knowledge Burst logo are registered trademarks of Reed Elsevier Properties Inc., used under licence. IDU is a registered trademark of Tracesmart Limited. TrueID is a registered trademark of LexisNexis Risk Solutions Inc. Other products and services may be trademarks or registered trademarks of their respective companies. Copyright © 2016 LexisNexis. No part of this document may be reproduced without the express permission of LexisNexis. Tracesmart Ltd is a company registered in England & Wales with company registration number 3827062 and whose registered office is at Global Reach, Dunleavy Drive, Cardiff CF11 0SN. Our data protection number is Z708281X. We are authorised and regulated by the Financial Conduct Authority with consumer credit licence number 565961.204/MK/DI/1. NXR11383-00-0516-EN-UK